

**INNOVATION
SCHOOL
THE GLASGOW
SCHOOL OF ART**



**University
of Dundee**



**scottish universities
insight institute**
mobilising knowledge for a better Scotland

Future Transitions in Palliative Care

Towards Scotland 2030

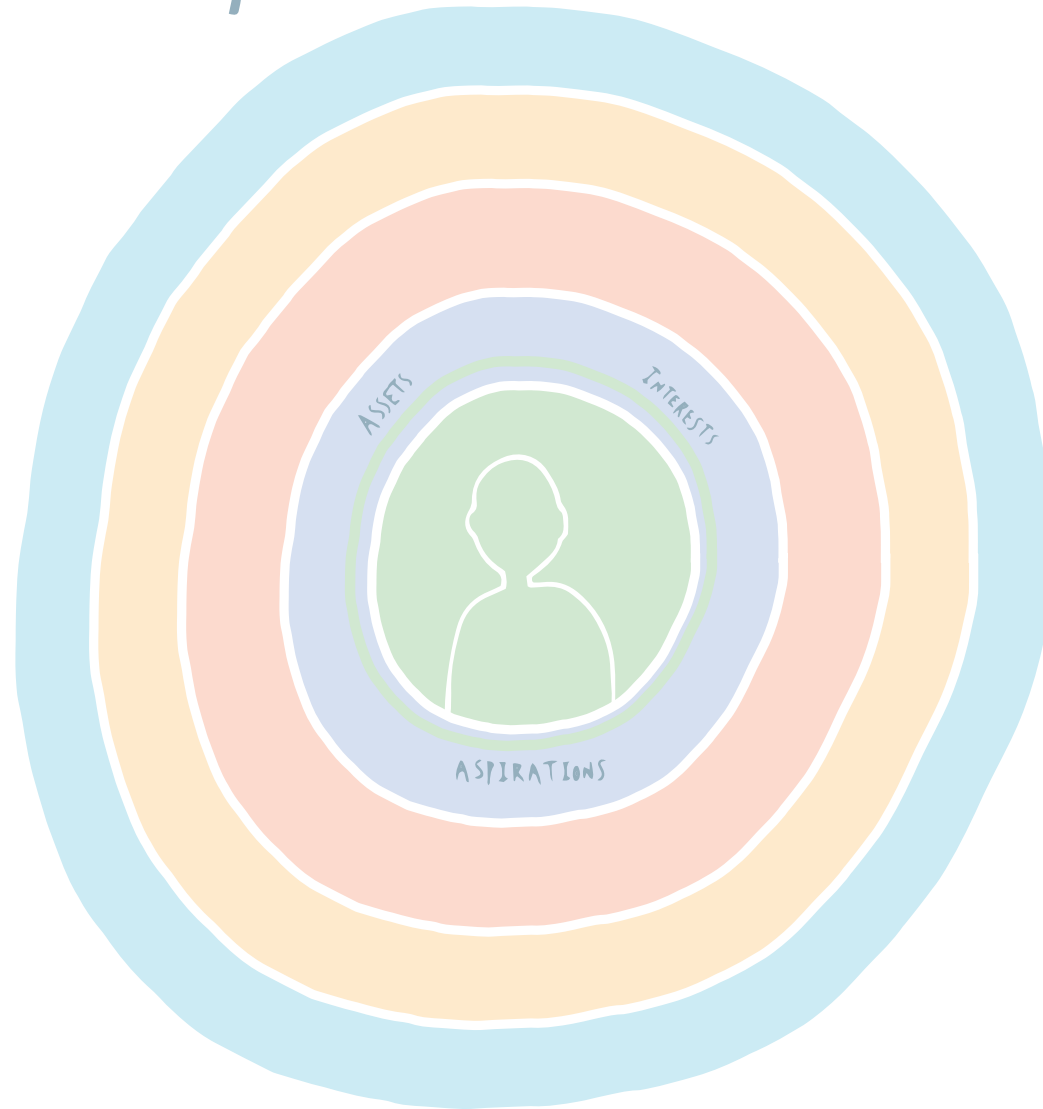


Dr Tara French, The Glasgow School of Art

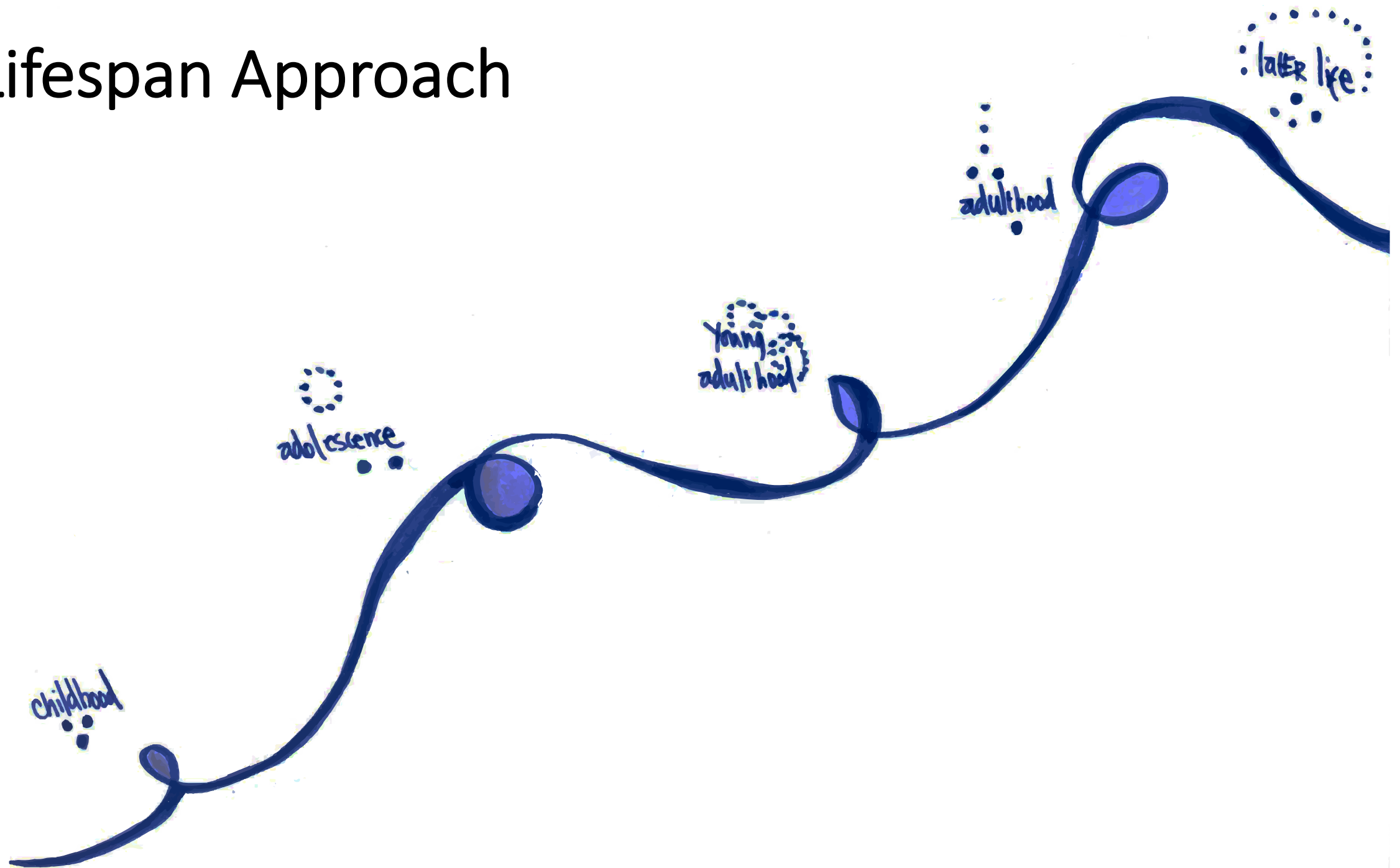
Professor Divya Jindal-Snape, University of Dundee

Transitions

— the person & their outcomes —



A Lifespan Approach

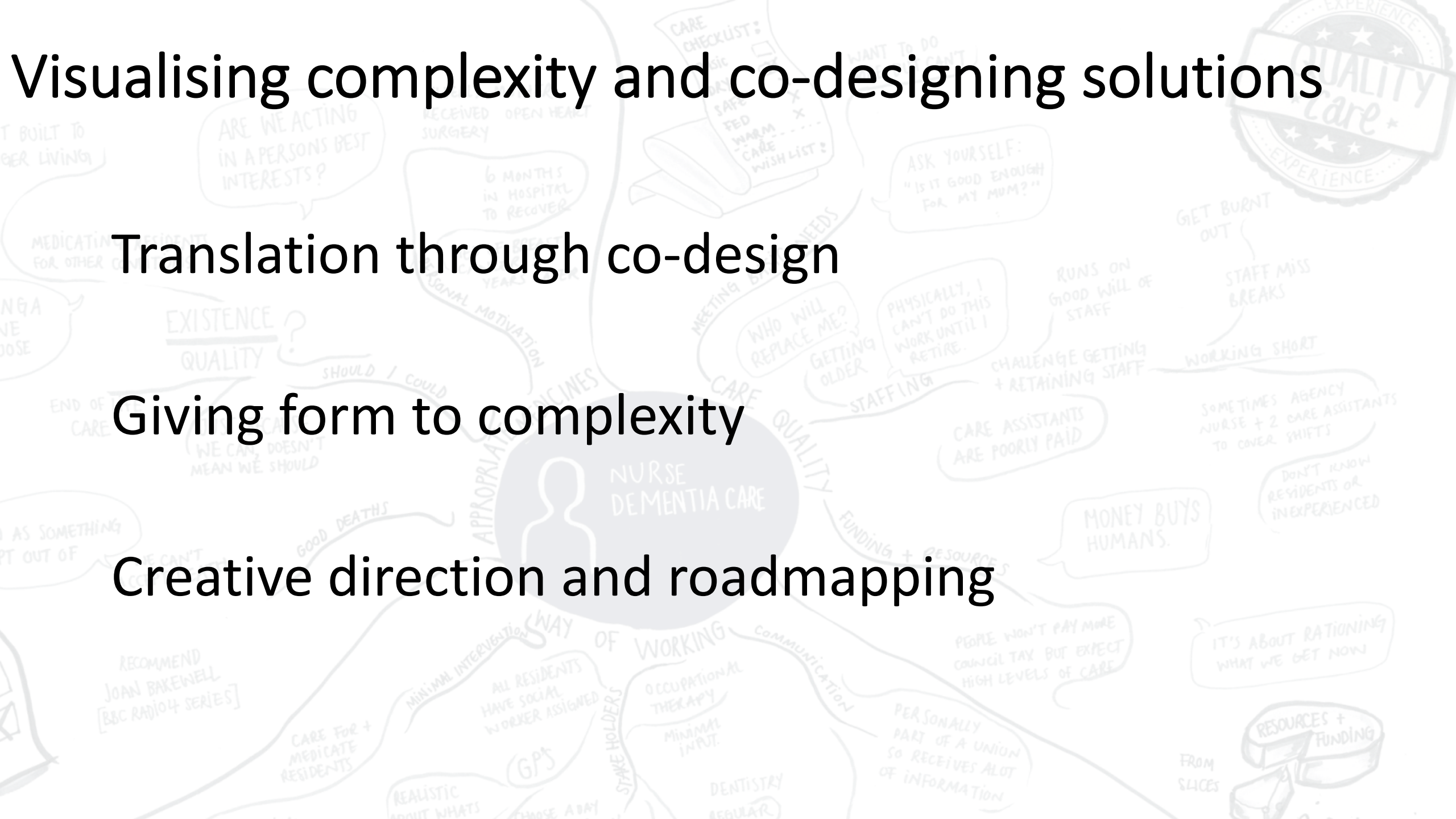


Visualising complexity and co-designing solutions

Translation through co-design

Giving form to complexity

Creative direction and roadmapping



Programme Aim

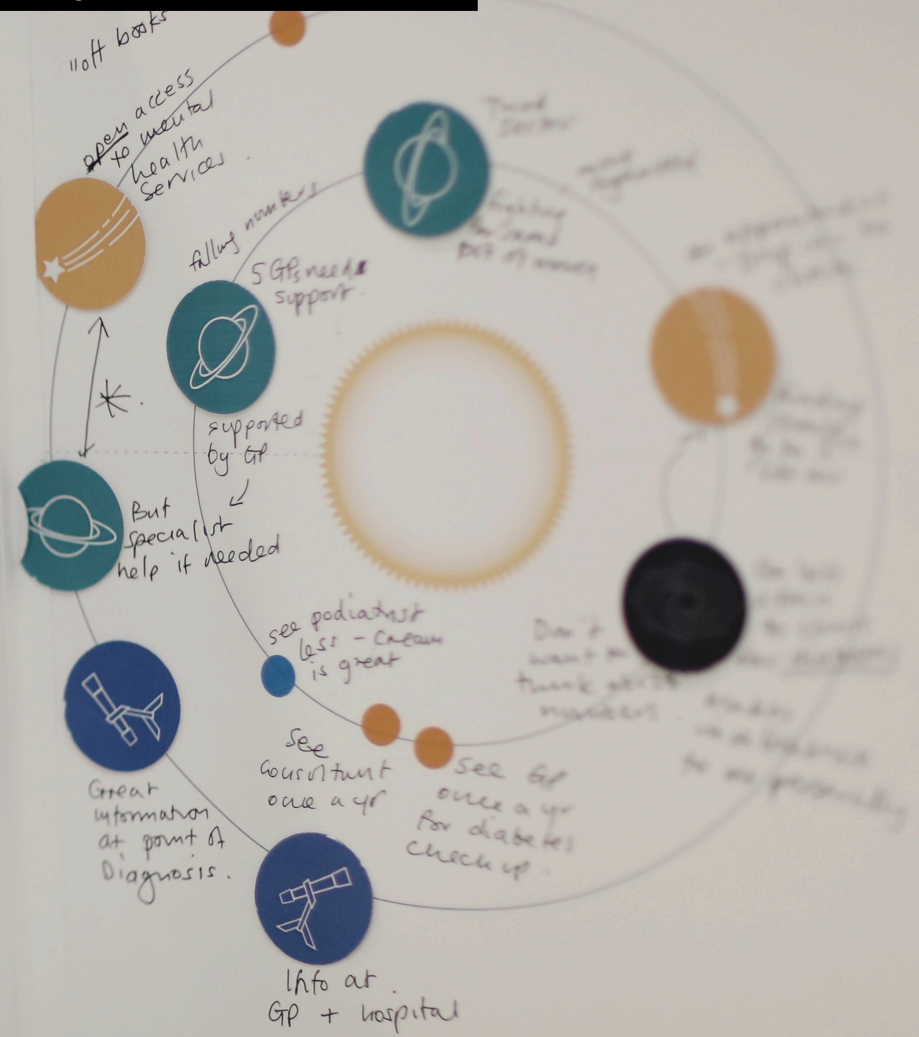
To explore future transitions in palliative care for people with life limiting conditions to understand the care needs and aspirations across the lifespan and scope future care models that support the development of person-centred care towards Scotland 2030

Seminar 1: Understanding the context



Unpacking research, policy and practice

Seminar 2: Learning from lived experience



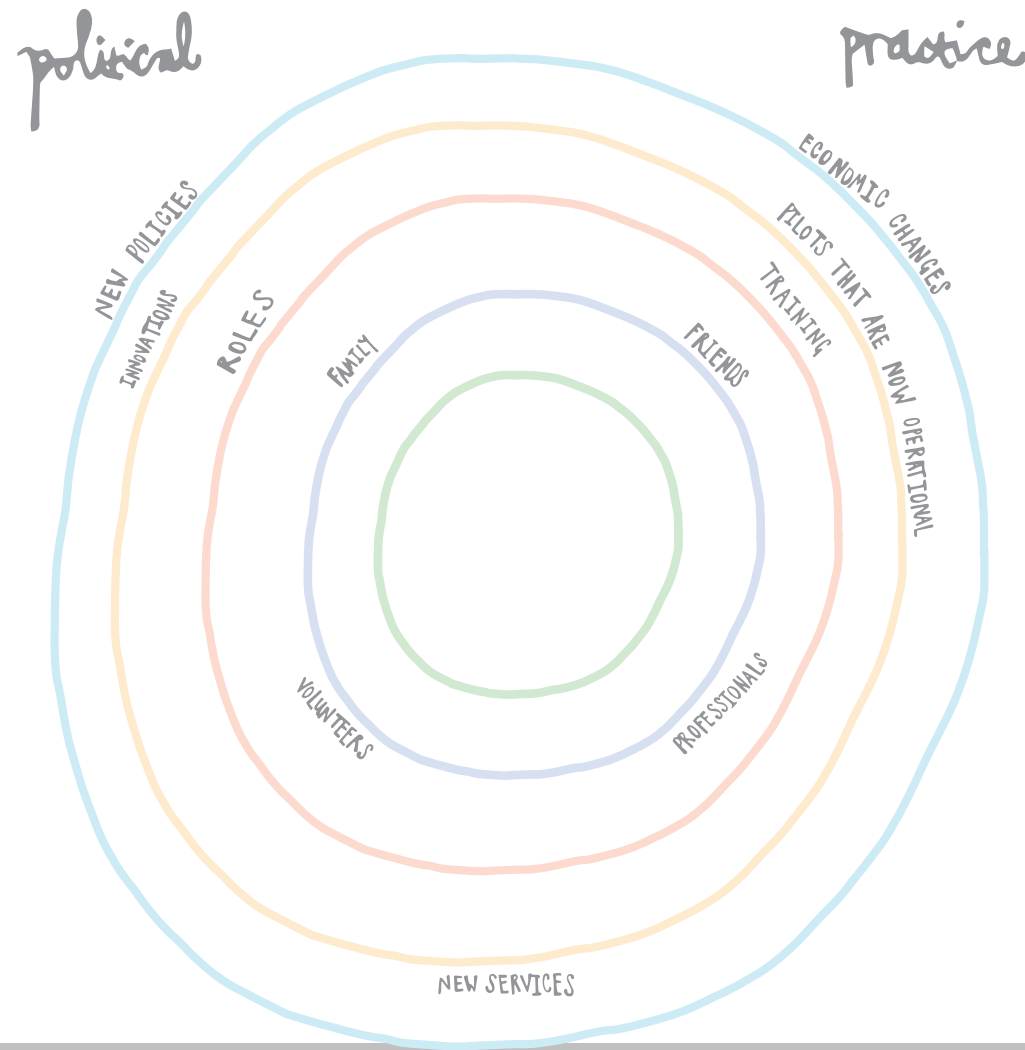
Sharing experiences of care and transitions

Seminar 3: Co-designing future transitions



Creating future transitions across the lifespan

Seminar 4: Practice, policy and research priorities



Roadmapping priorities to develop an action plan

Key Questions – beyond 2021

What aspects of transition are of key importance as we consider the future of palliative care?

What transitions will it trigger for others and what can be done to support them, especially the training needs of professionals and carers?

What would successful transitions look like in this context?

Thank you

t.french@gsa.ac.uk

d.jindalsnape@dundee.ac.uk



**University
of Dundee**



**scottish universities
insight institute**

mobilising knowledge for a better Scotland

<https://www.eventbrite.co.uk/e/future-transitions-in-palliative-care-tickets-43600437081>

Image credits: Louise Mather
Paul Campbell
Cara Broadley
Angela Tulloch