

**UNLOCKING POTENTIAL  
TRANSFORMING LIVES**



---

## **PRESENTATION TO THE CROSS PARTY PARLIAMENTARY GROUP ON PALLIATIVE CARE**

Wednesday 06 September 2017

UNLOCKING POTENTIAL  
TRANSFORMING LIVES



## SCOTTISH PRISON SERVICE

- In custody in Scotland
  - 7187 Males \*
  - 366 Females \*
  - 343 HDC (Home Detention Curfew) \*
- In custody in HMP Glenochil
  - 668 spaces
  - 626 in custody

Population trend has been largely static for the last 4-5 years

\* As at 26.8.17



UNLOCKING POTENTIAL  
TRANSFORMING LIVES

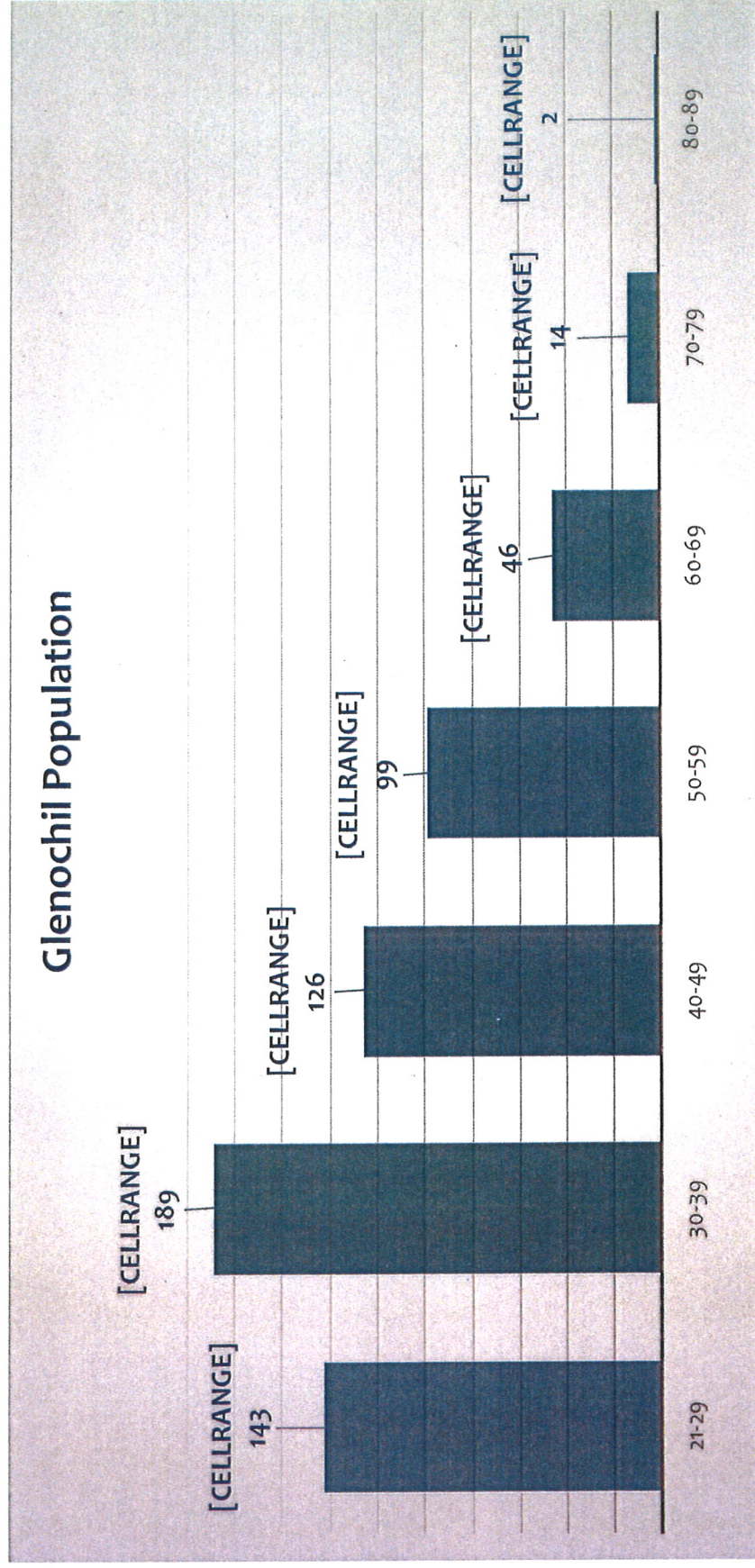


## SENTENCE TYPE DISTRIBUTION – HMP GLENOCHIL

Sentence Type	Abercrombie	Harviestoun	Devon	Total*
OLR	67	1		68
Life	45	29	1	75
LTP	231	99	4	335
STP	8	140	4	152
Totals	351	269	9	630

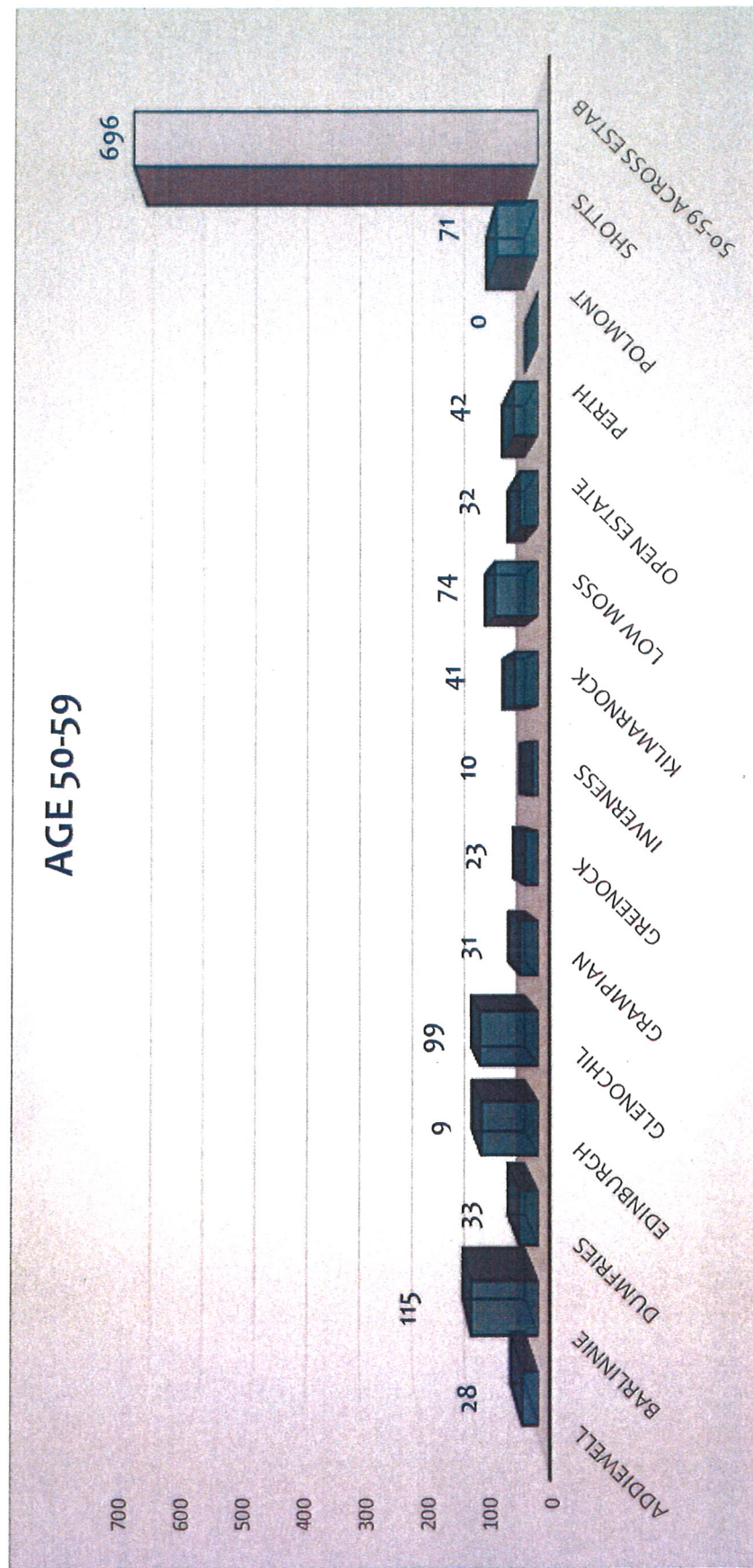
\* SPS Prisoner Records – 1 June 2017

## HMP GLENOCHIL DEMOGRAPHIC



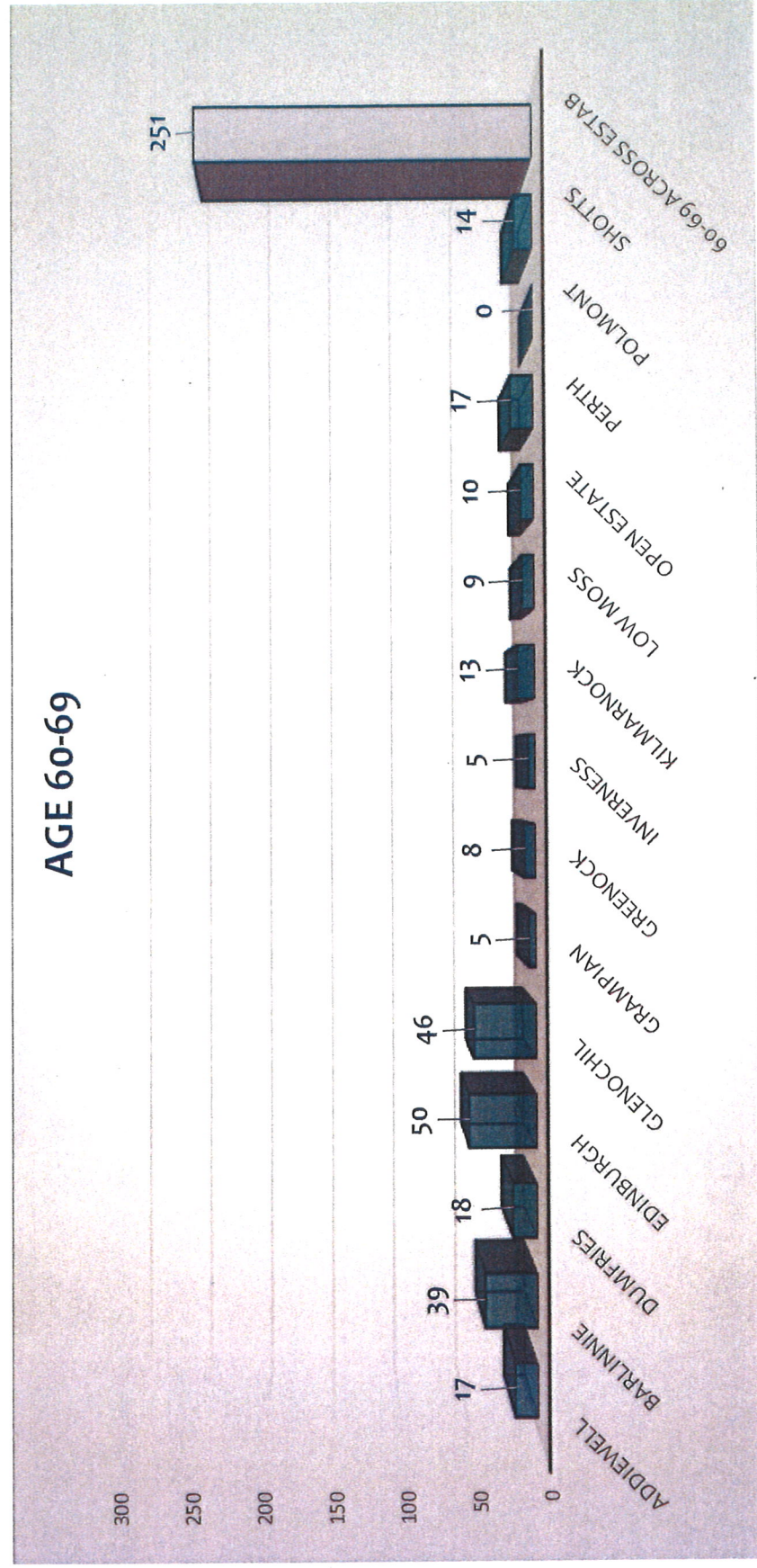
UNLOCKING POTENTIAL  
TRANSFORMING LIVES

## AGE 50-59 DISTRIBUTION IN PRISON IN SCOTLAND



UNLOCKING POTENTIAL  
TRANSFORMING LIVES

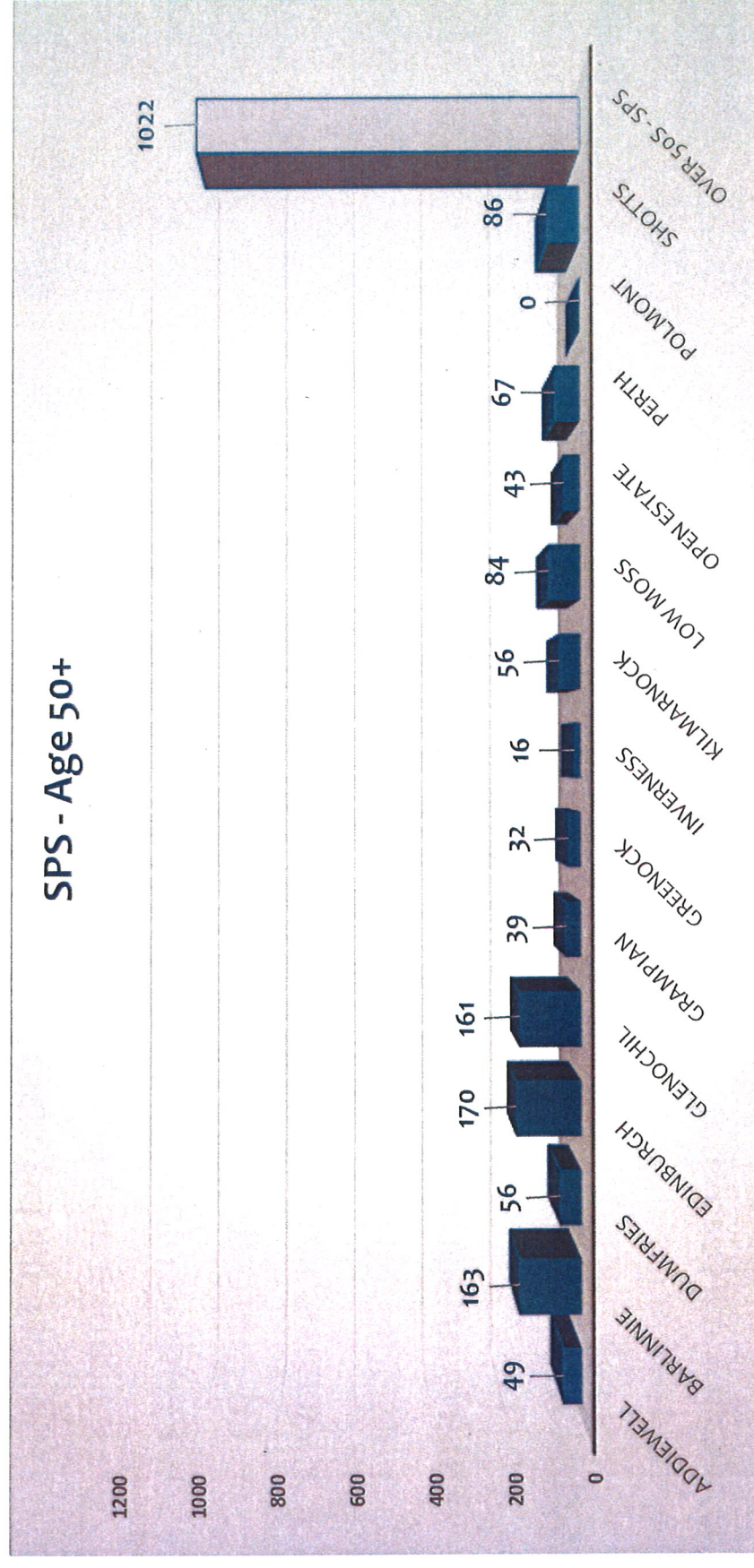
## AGE 60-69 DISTRIBUTION IN PRISON IN SCOTLAND



UNLOCKING POTENTIAL  
TRANSFORMING LIVES



## OVER 50 POPULATION TOTALS - SPS



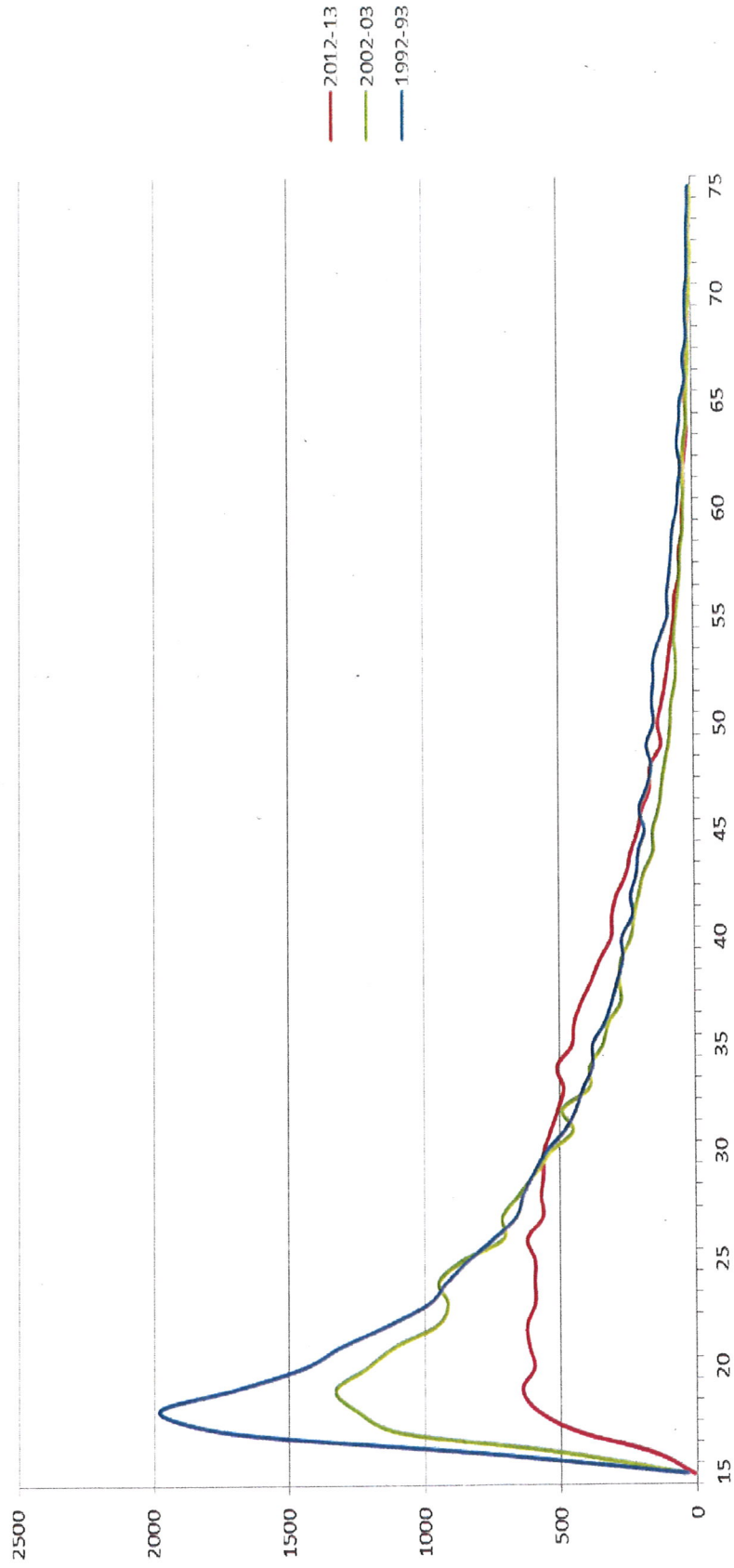
## **CHALLENGES**

- **Elderly prisoners and social care needs**
  - Prisons configuration
  - Accessibility
  - Co-morbidity of elderly population
  - Pending older cohort with long sentences
  - Palliative and end-of-life care pathway
  - Social care provision - prison
  - Meaningful activity
  - Through care arrangements for liberation

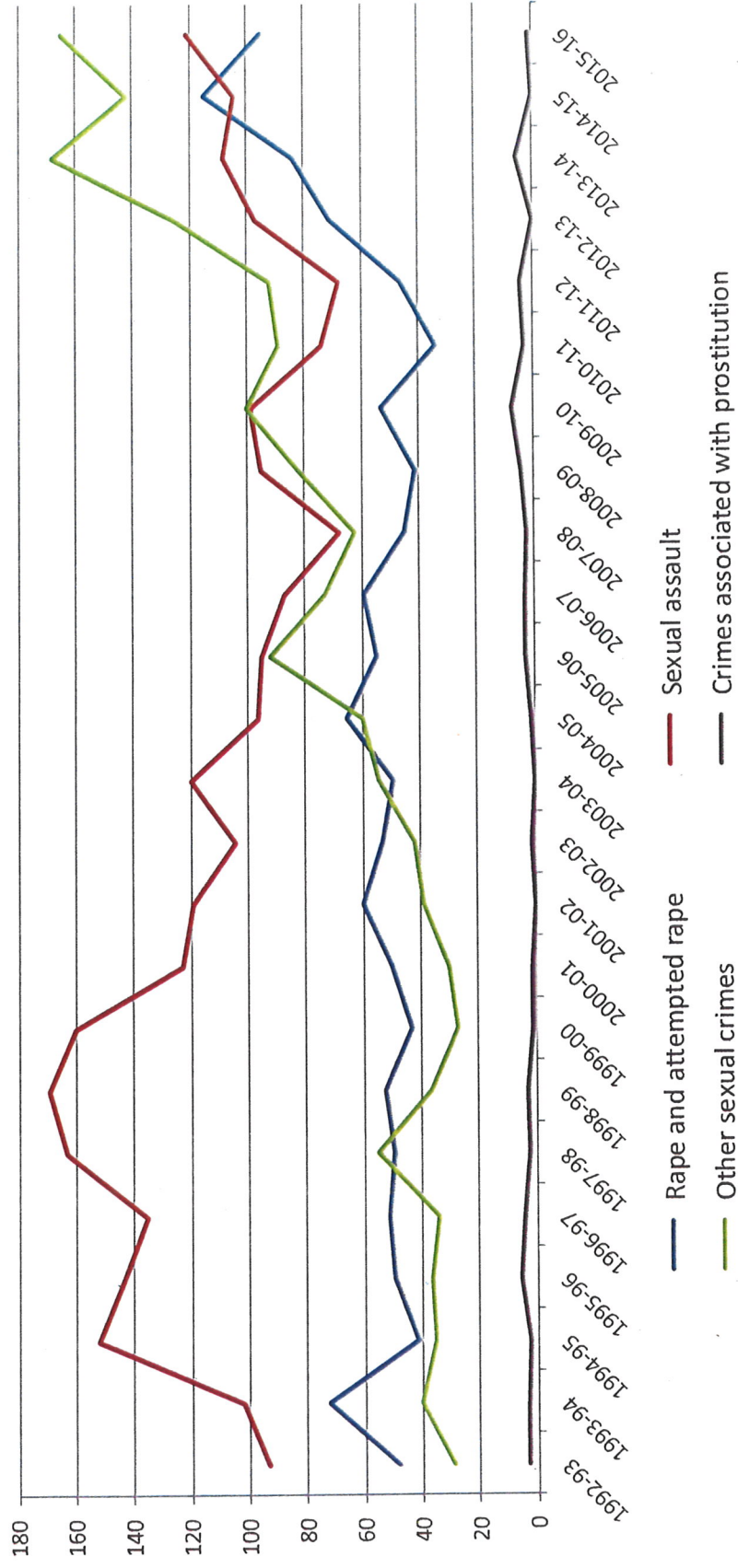


UNLOCKING POTENTIAL  
TRANSFORMING LIVES

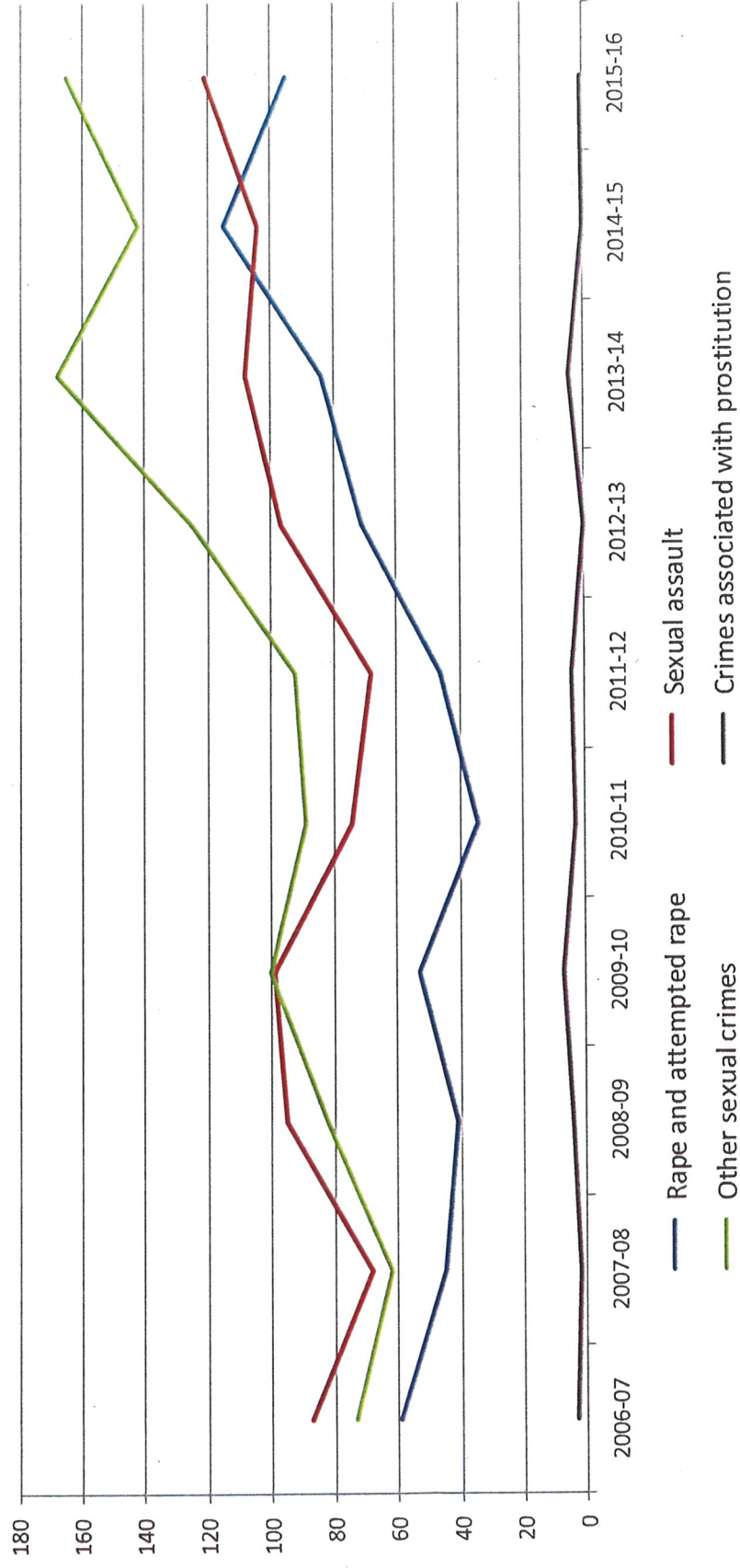
## AGE-CRIME CURVE - MALES



## NUMBER OF CUSTODIAL SENTENCES FOR SEXUAL CRIMES



## NUMBER OF CUSTODIAL SENTENCES FOR SEXUAL CRIMES



**UNLOCKING POTENTIAL  
TRANSFORMING LIVES**



## **LIMITED UK RESEARCH**

“There are some evident respects in which prisons have never been designed with older people and their needs in mind. Their very fabric (the stairs and steps and walkways, the distances, the gates, the football pitches and gymnasias; the serveries and queues; the communal showers; the incessant background noise) is, in general, constructed in blithe unconsciousness of the needs and sensibilities of the old.”

Crawley and Sparks 2005:350



## UNLOCKING POTENTIAL TRANSFORMING LIVES

### FINDINGS - PRISONER THEMES

- Socialisation
  - Social interaction is critical
- Staff reliance
  - Absolute dependence on staff
- Agency
  - Independence, determination, defiance
- Healthcare
  - Dominant, fear of death - NHS/SPS expectations
- Dignity
  - Privacy and embarrassment
- Activity
  - Appropriate, accessible, important
- Peer support
  - Essential but not always welcome
- Fear of Death
  - Dying in prison



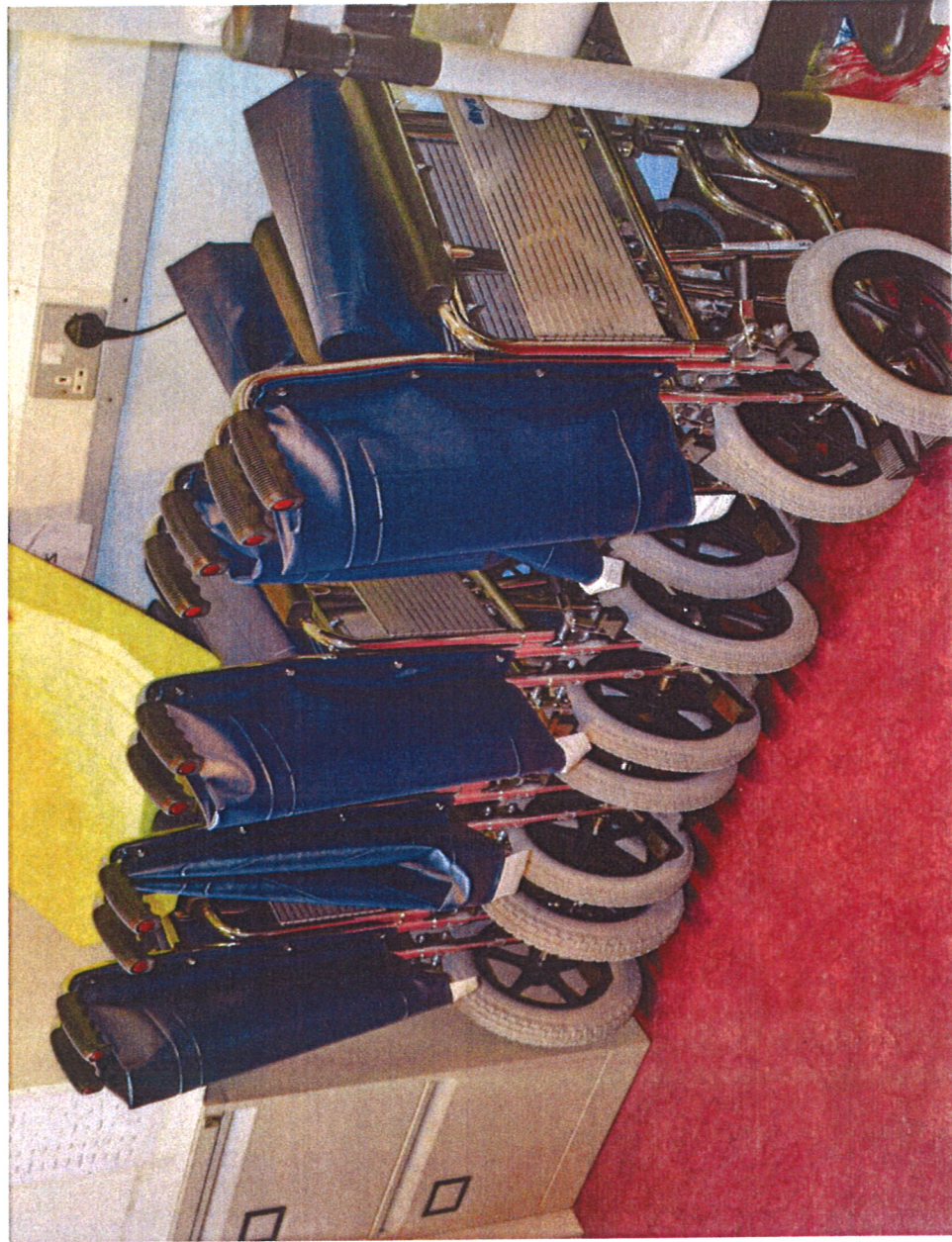
# UNLOCKING POTENTIAL TRANSFORMING LIVES SHOWER ADAPTATION



UNLOCKING POTENTIAL  
TRANSFORMING LIVES  
HALL ADAPTATION



# UNLOCKING POTENTIAL TRANSFORMING LIVES EQUIPMENT ADAPTATION



UNLOCKING POTENTIAL  
TRANSFORMING LIVES  
FACILITY ADAPTATION



“Respondents described how being infirm, of being mobility-impaired, impacted upon almost every aspect of their participation in the traditional prison regime”

Ironside 2016: 72

