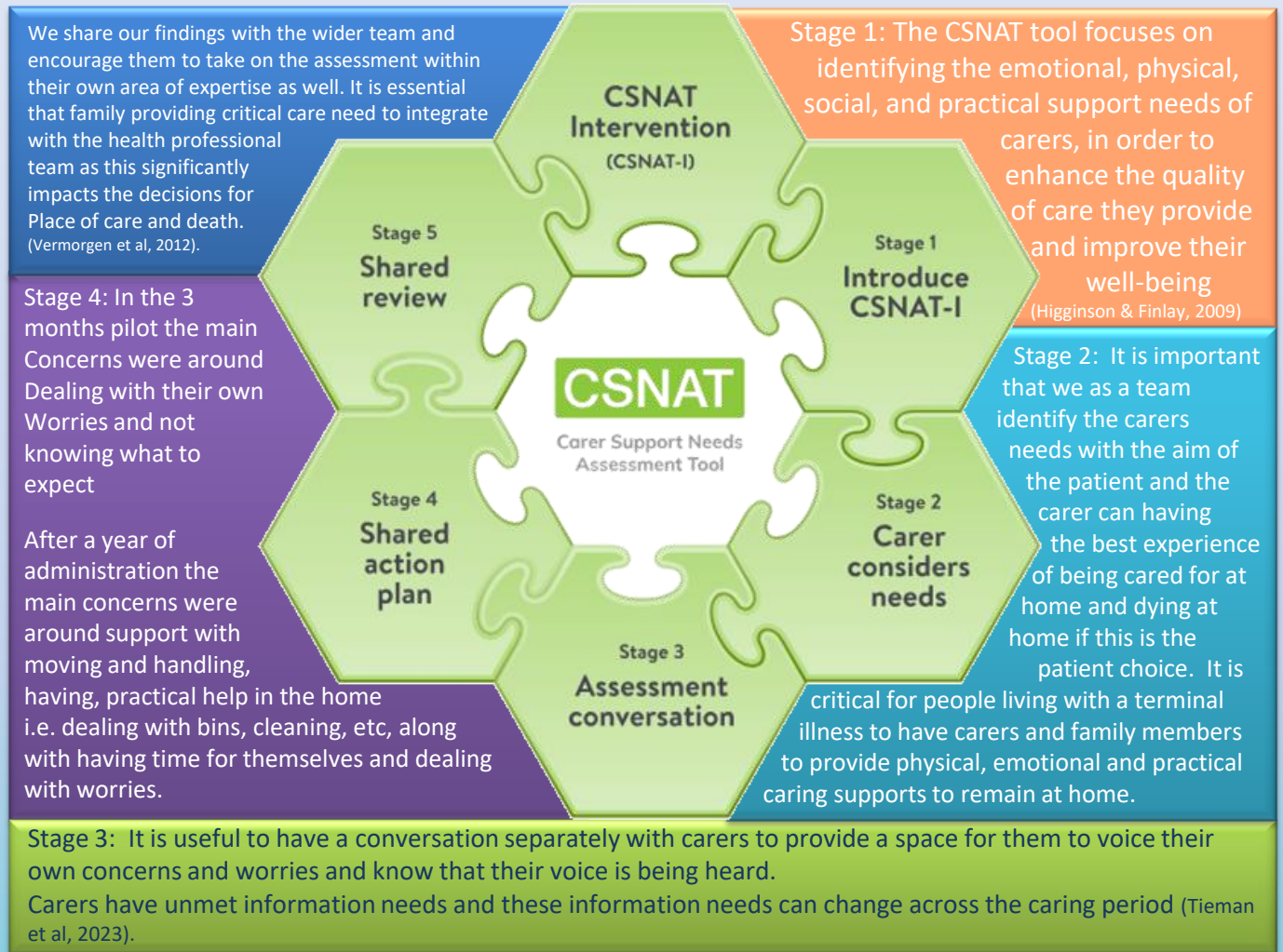


# What is CSNAT

## & Why Should We All Be Doing it?

Most people living with a terminal illness and approaching death will need the assistance of a non-professional carer such as a family member, friend, or neighbour to provide physical, emotional, and practical caring supports (Tieman et al., 2023).

Research shows that palliative care patients are often re-admitted to hospital following discharge due to a breakdown in carer support at home (Kadu et al., 2021), emphasising how important the role that carer support plays in caring for a dying loved one at home.



From  
January 2025 – April 2025,  
of the patients who wished to  
die at home, we were able to  
facilitate **81.6%** of those  
patients to fulfil their wish.

Ask the question

