



Primary Palliative Care
Research Group



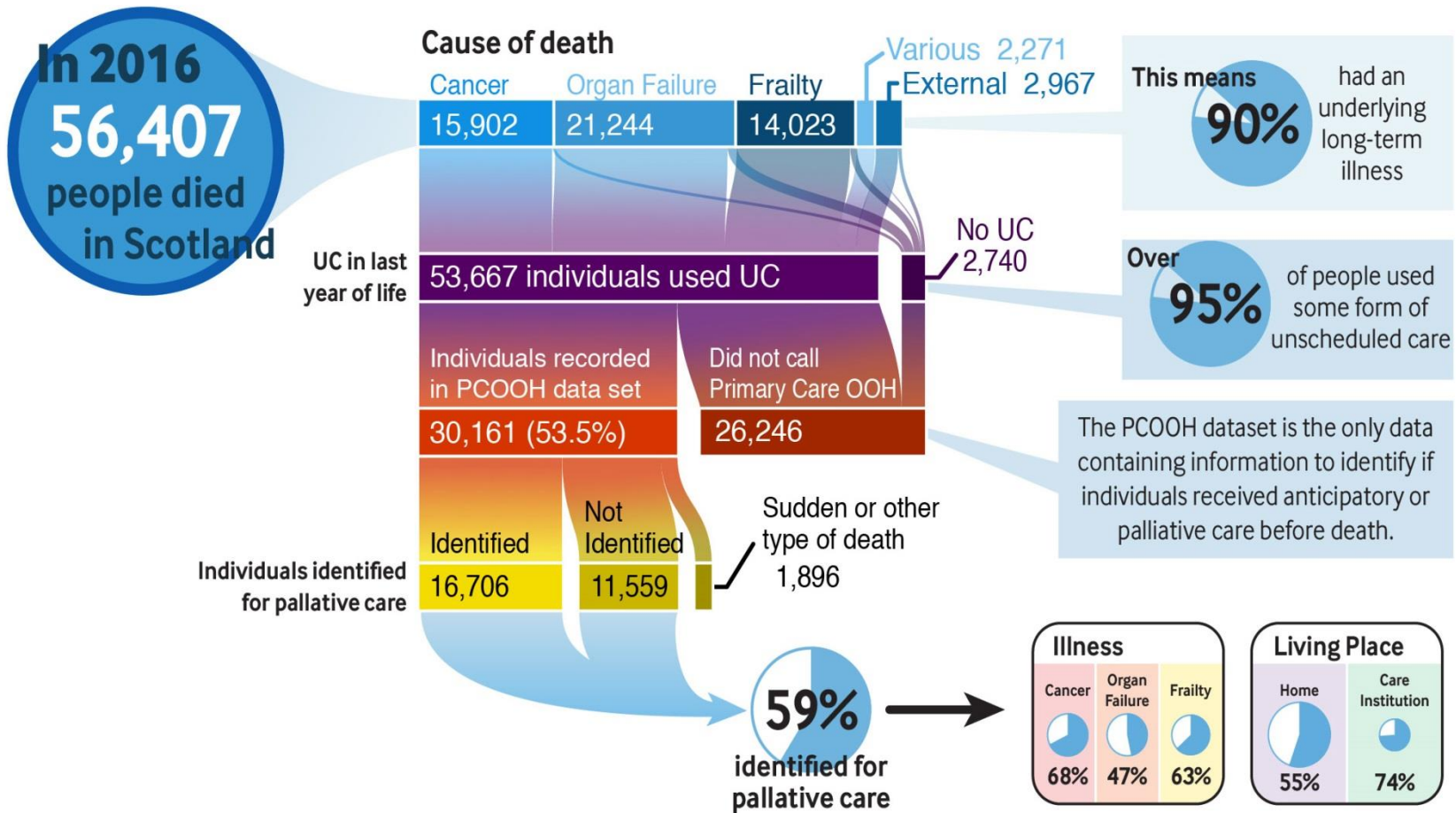
Dying well night and day: A mixed-methods evaluation of out-of-hours services in Scotland for people with palliative care needs

Mason B, Laidlaw S, Kerssens J, Stoddart A, Carduff E, Finucane A, Kendall M, Macpherson S, Brun N, Keen J, Tucker S, Moussa L, Haraldsdottir E, Ritchie L, Fallon M, Murray S, **Boyd K**

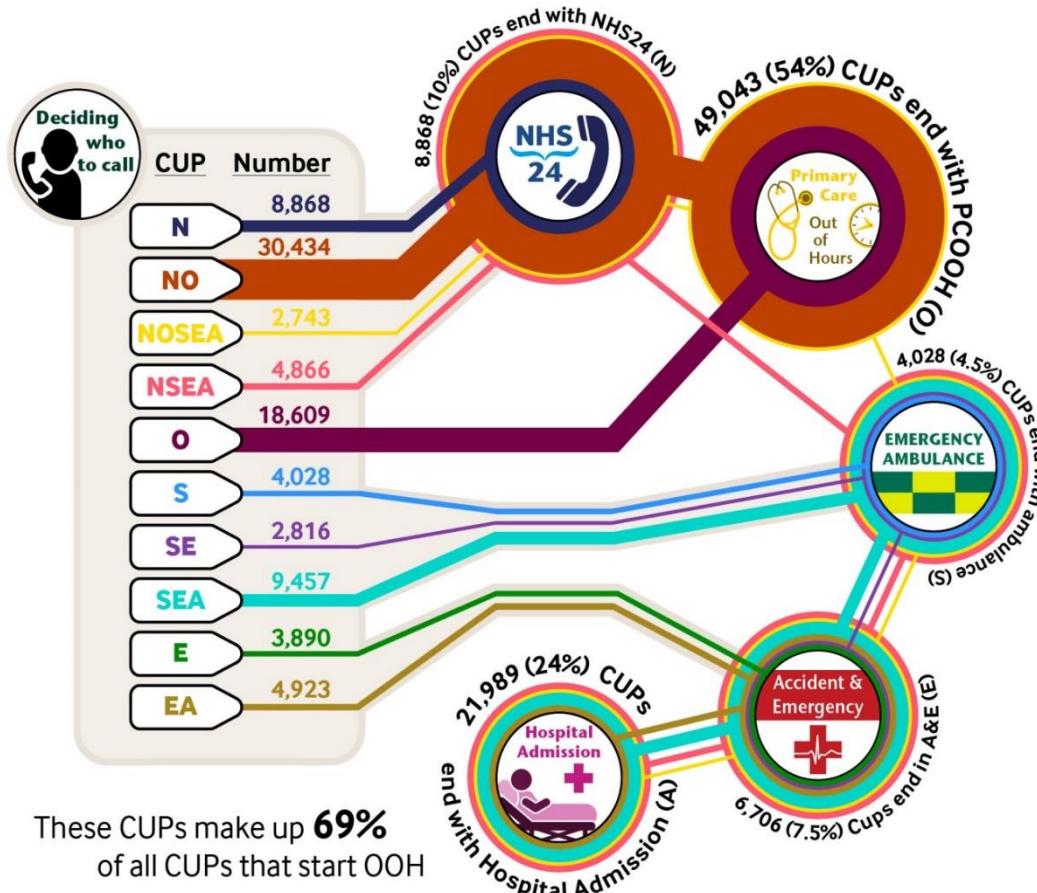


Care and support
through terminal illness

Unscheduled care used in Scotland



Top Ten Continuous Unscheduled Care Pathways (CUPs)



These CUPs make up **69%** of all CUPs that start OOH

If I phone an ambulance they're duty bound to take you to your nearest hospital but he didn't want to go to hospital.
Carer

CUP abbreviations N = NHS 24 NO = NHS 24 then Primary Care OOH
 NOSEA = NHS 24, PCOOH, Scottish Ambulance, A&E then Hospital Admission

Unscheduled care in Scotland

