



# AIIHPC

All Ireland Institute of  
Hospice and Palliative Care

***Improving the palliative care experience across the island of Ireland***

# AIHPC Partners



An Roinn Sláinte  
Department of Health



Belfast Health and  
Social Care Trust



Irish  
Hospice  
Foundation



LauraLynn  
IRELAND'S CHILDREN'S HOSPICE

WE ARE  
MACMILLAN.  
CANCER SUPPORT



Marymount  
University Hospital & Hospice



Northern Health  
and Social Care Trust



Northern  
Ireland  
Hospice



NUI Galway  
OÉ Gaillimh



Respite  
Rehabilitation  
Reassurance  
Harold's Cross  
& Blackrock



Public Health  
Agency



Queen's University  
Belfast



Southern Health  
and Social Care Trust



South Eastern Health  
and Social Care Trust

St. Francis Hospice  
Raheny | Blanchardstown



Trinity College Dublin  
Coláiste na Tríonóide, Baile Átha Cliath  
The University of Dublin



UCC  
Coláiste na hOllscoile Corcaigh, Éire  
University College Cork, Ireland



Waterford  
Institute of  
Technology



Western Health  
and Social Care Trust

# AIHPC Funders



Department of  
**Health**

An Roinn Sláinte  
Mánnystrie O Poustie



An Roinn Sláinte  
Department of Health



Feidhmeannacht na Seirbhíse Sláinte  
Health Service Executive



Public Health  
Agency



Public Health  
Agency

Research and Development



**JPND**  
research

EU Joint Programme – Neurodegenerative Disease Research



Coimisiún na hÉireann  
um Chearta an Duine  
agus Comhionannas  
Irish Human Rights and  
Equality Commission



Irish  
Hospice  
Foundation



# AIHPC Team



Mary Kearns  
Office Manager



Dr Mary Rabbitte  
Research  
Programme Manager



Karen Charnley  
Director



Dr Cathy Payne  
Education  
Programme Manager



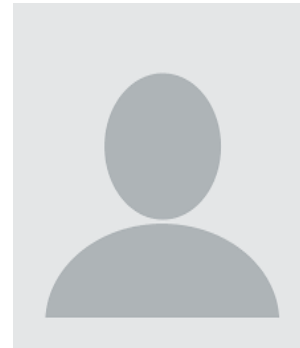
Paula Pinto  
Policy and Practice  
Programme Manager



Clodagh O'Donovan  
PCRN Project Manager



Marie McKeon  
Knowledge Transfer  
Project Manager



Martina McHugh  
Business Support



Yvonne McCahill  
Communications  
Project Manager



Mick Bannon  
IT Manager



# AIHP

Palliative Care Research Network

# AIHPC's Palliative Care Research Network (PCRN)



**Founded in 2012** to address the need for more collaborative multidisciplinary research in palliative care on the island of Ireland.

## Vision

As the leading network for palliative care research on the island of Ireland, PCRN members undertake **internationally recognised research** that enhances palliative care **knowledge and expertise** and improves the **quality of life** of people with life limiting conditions







# AIIHPC

Palliative Care Research Network



## 49 PCRN Members Across 9 Disciplines

# AIIHPC PCRN Funders

## All Ireland Funding to support network



Clodagh O'Donovan  
PCRN Project Manager  
(part-time)



Marie McKeon  
KTE Project Manager  
(part-time)

## AIIHPC Funding and Project Funding



Dr Mary Rabbitte  
Research Programme Manager





# PCRN Strategic Plan 2017 -2022 Key Achievements



- **21 to 49 PCRN Members** from 5 to 9 Disciplines
- 4 Annual Symposia, 2 All Ireland Interdisciplinary Events, EAPC International Seminar

- **41 to 202 Early Career Researcher Forum (ECRF) Members**
- 8 ECRF Members Transitioned to PCRN

Involving Voices4Care in **70 Research Activities**

- **> 450 peer-reviewed publications**
- Informing Public, Health and Social Care Professionals, Service Providers, Policymakers

- **€3m EU funding and €2.3m national funding leveraged for Research Priorities**

Collaborative  
and Coherent  
Research  
Community



**Dr Tracey McConnell,**  
Marie Curie Senior  
Research Fellow QUB



**Professor Andrew Davies,**  
Professor of Palliative  
Medicine TCD/UCD/OLHCS



**Dr Irene Hartigan,**  
Lecturer Nursing  
UCC



**Dr Lisa Graham Weisner,**  
Lecturer Psychology QUB



**Dr Mary Nevin,**  
Assistant Professor  
of Nursing DCU

## Welcomed 5 New PCRN Members 2021

4 Early Career Researcher Forum Members  
Transitioned to PCRN

Research  
Leadership  
and Capacity



**Anne Jordan**, Dublin  
Simon Community



**Dr Aoibheann Conneely**,  
Trinity College Dublin &  
Our Lady's Hospice and  
Care Services



**Lisa Cronin**, HSE  
Community Care



**Dr Deborah Muldrew**,  
Ulster University

**Early Career Researcher Forum (ECRF)  
Abstract Presenters**

**Welcomed 54 New ECRF Members 2021**



# Research Leadership and Capacity

International Observatory on End of Life Care | Lancaster University | Hull York Medical School | Cicely Saunders International | The Martin House Research Centre | University of York | King's College London

## Rapid evaluation of the Covid-19 pandemic response in palliative and end of life care: Multinational delivery, workforce and symptom management (CovPall)

**Improving palliative care for people with Covid-19 by sharing learning**

Dr Mehdi B Hecoglu  
Research Associate/Project Coordinator  
North to South Palliative and End of Life Care Outcomes Programme  
Rapid evaluation of the COVID-19 pandemic response in palliative and end of life care: national delivery, workforce and symptom management (CovPall)  
CovPall-Connect: HSC UK Data & Connectivity HEP Project  
Palliative care Outcome Scale (POS) Development Team  
Cicely Saunders Institute of Palliative Care, Policy & Rehabilitation, King's College London

Mr Rajesh Kumar  
CovPall Steering Group  
Cicely Saunders Institute of Palliative Care, Policy & Rehabilitation, King's College London

hospiceuk | EAPC | Integrating Lives | John Rylands | palliative care research and innovation report | POS

<https://www.kcl.ac.uk/cicelysaunders/research/evaluating/covpall-study>

CovPall



## Breakthrough Cancer Research

**Mission & Vision**  
Breakthrough is committed to funding research to improve cancer care and outcomes and to ensure patient benefit is at the core of our efforts.

Breakthrough will achieve its strategic objectives through increased investment and focus on these research priorities over the next several years.

**Priorities**

1. Increase our research investment into poor prognosis cancers
2. role of the immune system in cancer
3. Improve integration of cancer research into cancer care
4. discover and develop new therapeutics
5. improve the effectiveness or specificity of current cancer therapies
6. innovation at every stage of the cancer patient journey

Frances Drummond

**AIHPC**  
All Ireland Institute of Hospice and Palliative Care

'CONNECTING POLICY, PRACTICE AND RESEARCH TO IMPROVE PALLIATIVE CARE IN NORTHERN IRELAND'

## OVERVIEW OF ULSTER UNIVERSITY'S PALLIATIVE AND END OF LIFE CARE RESEARCH PORTFOLIO

**PROF SONJA MCILFATRICK**  
HEAD OF SCHOOL OF NURSING AND PROF OF NURSING AND PALLIATIVE CARE, ULST



## Online Workshop

### Digital Communication Skills for Palliative Care Researchers

April 2021, 9:15am-12:30pm

This workshop was proudly supported by:

AIHPC | NALA | The Communications Clinic | EAPC

AIHPC Digital Communication Skills for Palliative Care Researchers, April 2021

## Aims

- Understand the basic principles of a qualitative evidence synthesis
- Understand context of search methods
- Understanding setting criteria for selecting studies
- Understand the principles of extracting and synthesising findings from a QES.
- Understand the application of Grade CERQual to QES findings.

## Arts and Minds: Wellbeing in Kidney Disease

Presenter: Dr Helen Noble

Palliative Care  
It's more than you think

AIHPC

#pallcareweek

PALLIATIVE CARE WEEK 12-18 SEPTEMBER

Arts and Minds: Wellbeing in Kidney Disease: Palliative Care Research Network (PCRN) Webinar

# 7 Online Workshops and Interactive Events 2021

## 161 Participants and 780 Views Post Event Recordings



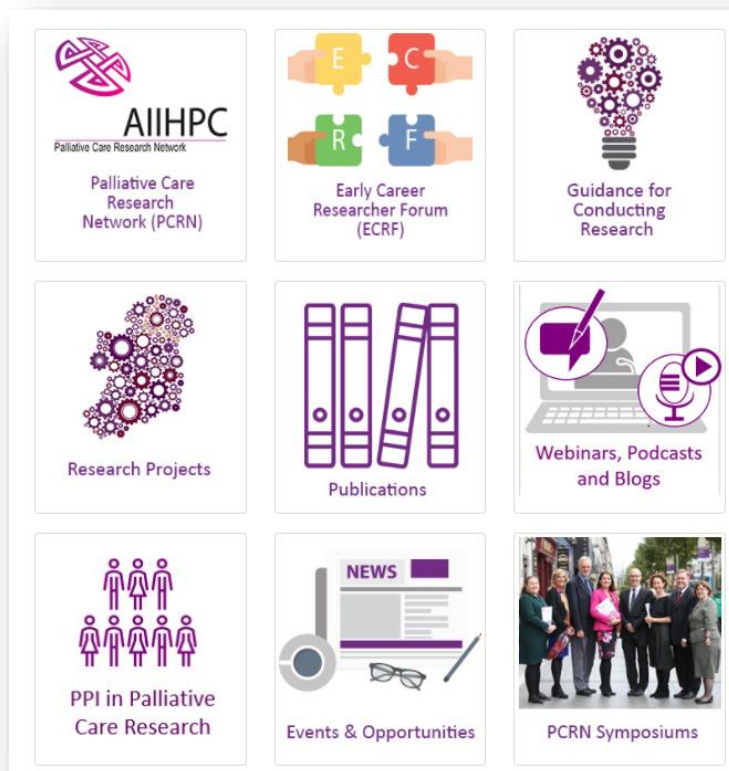
Service User  
and Carer  
Involvement



20 Research Engagements 2021

Disseminate  
Research  
Knowledge

7,349 unique page visits to The Palliative Hub – Professional/Research



## 8 New Research Project Webpages



## 7 New PCRN & ECRF Blogs & Podcasts



## New Tab – PPI in Palliative Care Research



Patients, their Families and Carers, and Interested Citizens Involvement in Palliative Care Research

1. [What is PPI?](#)
2. [What is PPI in palliative care research?](#)
3. [Why is PPI important?](#)
4. [How do AIIHPC support PPI?](#)
5. [Helpful resources](#)



## COVID-19 and Nursing Homes

- **Advance Care Planning**
- **Legal Policy Analysis** based on Experiences of Care

## Symptom Management

- **Physical Activity and Bone Health** for People with Bone Metastases
- Model of **Rehabilitative Palliative Care**
- Clinical Phenotype for **Cachexia (weight loss)** in Chronic Kidney Disease
- Attitudes towards **Deprescribing** in Older People
- Improving **Prescribing** for People with Cancer receiving Palliative Care
- Management of **Constipation** for People with Advanced Cancer
- Mindfulness and **Mental Health** for People with End-Stage Kidney Disease

## Decision Making

- **Anticipatory Care Planning** for older adults with anticipated functional decline
- **Support exchange** between patients and family caregivers
- **Mutual support** for decision making

## Future Service Planning

- Palliative and **End-of-Life Care Data** in Ireland
- Health Care Assistants for **out-of-hours palliative care** in Northern Ireland
- Implementing **Universal Palliative Care** in Ireland
- Update of **Adult Palliative Care Policy** in Ireland
- **Inequalities** in Palliative Care for Older People in Ireland
- **Integrated Palliative Care** for People with Serious Mental Illness in Northern Ireland
- Mapping Parkinson's Disease **Needs and Services**

## PCRN International Research

Source of Funding	Research Area	PCRN Collaborations
EU Horizon 2020	Psychosocial and educational interventions for people with <b>advanced cancer</b> and carers (DIADiC)	Prof Phil Larkin (UCD); Prof Suzanne Guerin (UCD); Assoc. Prof Michael Connolly (UCD); Prof Charles Normand (TCD); Prof Joanne Reid (QUB); Prof Kevin Brazil (QUB)
EU Horizon 2020	Better treatments for <b>breathlessness</b> in palliative and end of life care (BETTER-B)	Prof Karen Ryan (UCD); Prof Charles Normand (TCD)
EU Joint Programme of Neurodegeneration	Family carer decision support interventions for people with <b>dementia</b> (MySupport Study)	Lead Prof Kevin Brazil (QUB); Dr Gillian Carter (QUB); Dr Nicola Cornally (UCC)
EU Cross Border Health Intervention Trials	Anticipatory care planning intervention for <b>older adults</b> at risk of functional decline	Lead Prof Kevin Brazil (QUB); Dr Frank Doyle (RCSI); Dr Peter O'Halloran (QUB) Dr Gillian Carter (QUB) and clinical partners





**Thank you**

[www.thepalliativehub.com/research](http://www.thepalliativehub.com/research)

[www.aiihpc.org](http://www.aiihpc.org)

