

SPARC – Supportive & Palliative Action Register in the Community

Dr Melanie Sloan, Susanne Gray, Vicki Cloney & Dr Katie Clark
Renfrewshire Health and Social Care Partnership

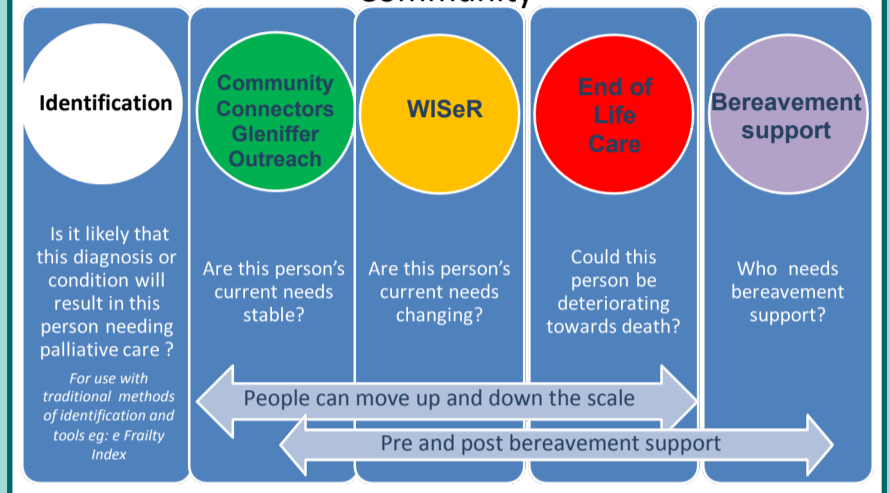
Introduction

A previous partnership with Macmillan Cancer Support aimed to redesign community based palliative care in Renfrewshire. This led to the testing of **SPARC-Supportive and Palliative Action Register in the Community**. Key outputs included:

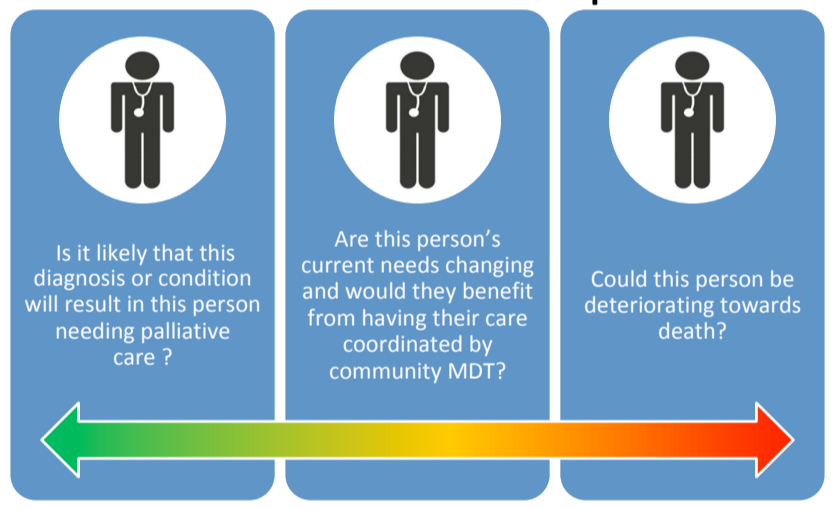
- development of MDT meetings called WISeR which stands for Weekly Integrated System Response
- development of a social prescribing model for people with a palliative condition whose support needs are stable, which we refer to as the **Green Stream**

This led to a year-long partnership with Healthcare Improvement Scotland to test ways to more effectively identify people who would feed into these services, which was funded by Healthcare Improvement Scotland's iHub.

SPARC – Supportive Palliative Action Register in the Community

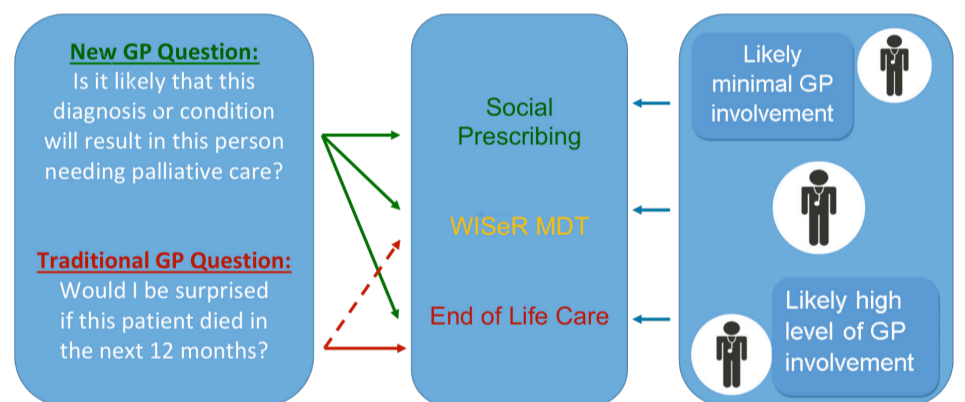


Identification: new GP question?



New GP Question

The main shift in thinking was to establish how to identify people who would benefit from the Green Stream, the social prescribing arm of the SPARC approach. This led to the development of a 'new' GP question to identify people much earlier in their disease or condition. The traditional 'surprise question' is still helpful for identifying people approaching the end of their life, but we want to offer support and advice long before this, facilitating **early palliative care**.



SPARC Registers

Through our work with the GP practices, it became apparent that there are a wide variety of approaches to managing palliative care registers and meetings. Therefore, we have developed a new '**SPARC**' register format that supports both identification and discussion of these individuals. This register can be shared with other practices should they wish to use it.

The date an individual is added to the SPARC register is recorded.

The primary diagnosis which has triggered the person's addition to the SPARC register. This could be related to **any condition**, for example: organ failure, cancer, multimorbidity or frailty related to advancing age.

This indicates how 'active' a person's needs are, with those with the most **GP related activity** given the highest priority.

EMIS codes have been identified for Green, Amber and Red. Use of these defined codes allows practices to easily search and create lists of people who have been coded in this way.

People on the SPARC register are coded either **supportive** or **palliative** based on either their stage of disease/condition or the stage of communication. This takes into consideration the person's readiness for **ACP conversations**.

Greenlaw Practice - SPARC

- Priority - Activity**
- 1 - High
 - 2 - Moderate
 - 3 - Low
 - 4 - Deceased

Codes to Use
On Supportive Care Register - EMISNQON14
Palliative Care - ZV57C

Date Added	Name	CHI	Diagnosis	GP/Deputy	Priority	Coded	Date of KIS	WISeR

Personal identification

The GP who knows the person the best

The date the **KIS** was last updated to help ensure that the information is current and relevant

The date the individual was referred to the **WISeR MDT**